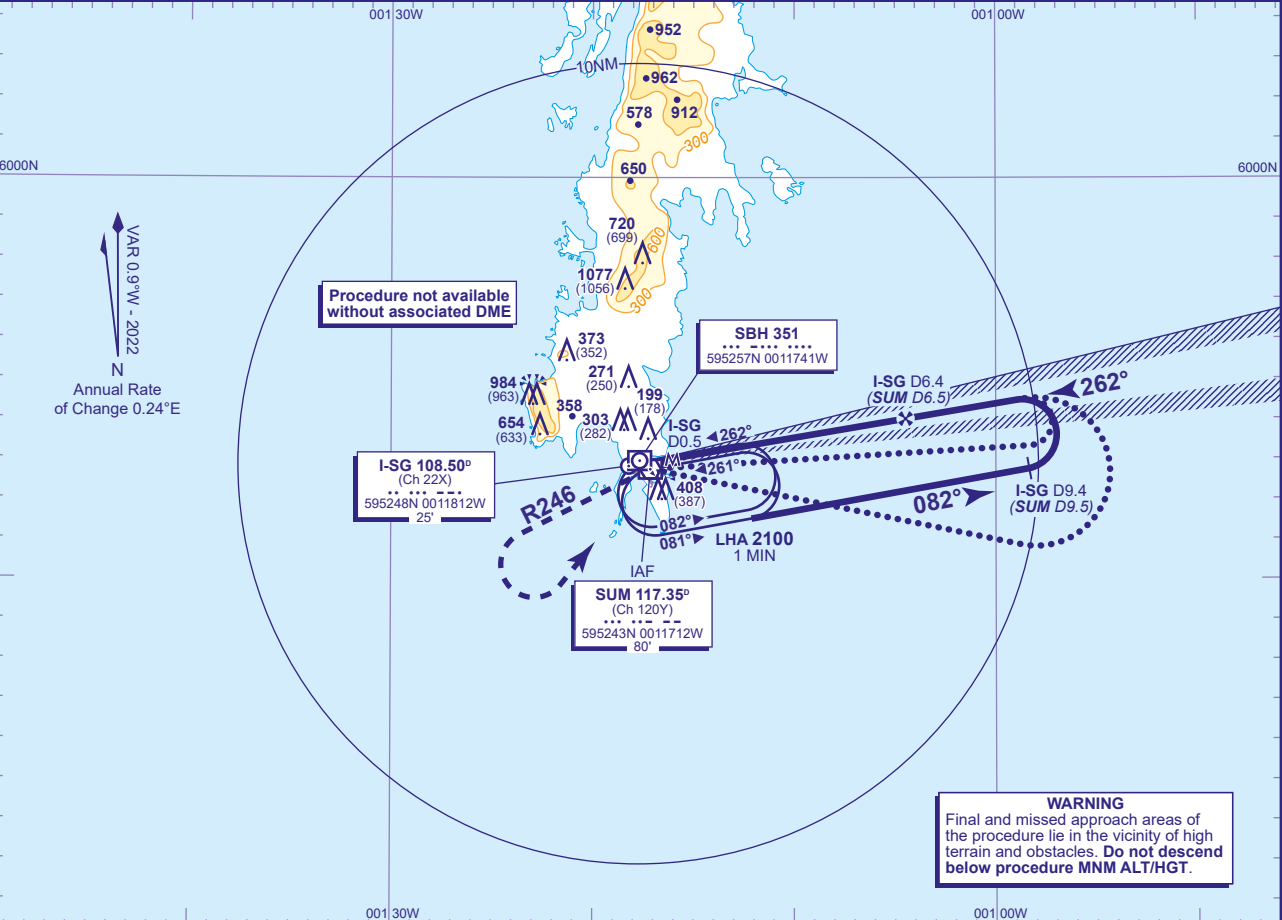


INSTRUMENT APPROACH CHART - ICAO

SUMBURGH
LOC/DME/
VOR or NDB(L)
RWY 27
(ACFT CAT A,B,C)

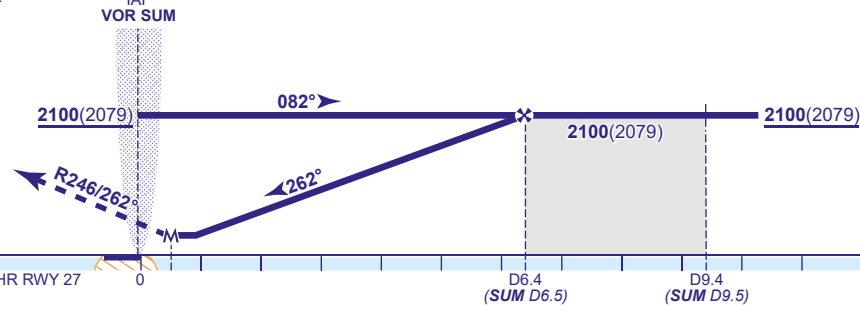
<div>MSA</div> <div><div>24</div><div>180</div><div>090°</div><div>21</div></div> <div>VOR SUM or NDB(L) SBH</div>	TWR 118.255	SUMBURGH TOWER	AD ELEVATION 21	TRANSITION ALTITUDE 6000
	RAD 131.300, 123.155	SUMBURGH RADAR	THR ELEVATION 21	
	ATIS 125.855	SUMBURGH INFORMATION	OBSTACLE ELEVATION 1077 AMSL (1056) (ABOVE THR)	
	AFIS 118.255	SUMBURGH INFORMATION	BEARINGS ARE MAGNETIC	



RECOMMENDED PROFILE GRADIENT 5.24%, 318FT/NM						
I-SG DME	6	5	4	3	2	1
ALT(HGT)	1990(1969)	1670(1649)	1350(1329)	1030(1009)	710(689)	400(379)

Arrival **not below MSA**. Shuttle in hold as necessary.

MAPt I-SG DME 0.5
Continuous climb to **3000**. Initially straight ahead until abeam **VOR SUM** then turn left to establish on **SUM VOR R246 (NDB(L) SBH QDM 245°)**. On reaching **1500** turn left to **VOR SUM** or **NDB(L) SBH** climbing to **3000** or as directed.



Aircraft Category		A	B	C	Rate of descent	G/S KT	160	140	120	100	80
OCA (OCH)	Procedure	330(309)	330(309)	330(309)		FT/MIN	850	740	640	530	420
VM(C)OCA (OCH AAL)	Total Area	800(779)	1200(1179)	1400(1379)							
	Restricted (See Note 3)	800(779)	800(779)	1130(1109)							

ALTERNATIVE PROCEDURES
From NDB(L) SBH hold: As for main procedure except fly outbound on extended outbound leg of the NDB(L) SBH hold.
From overhead VOR SUM or NDB(L) SBH: From the overhead **not below 2100(2079)** fly outbound on SUM VOR R089/NDB(L) SBH QDR 091° (CAT A,B), SUM VOR R104/NDB(L) SBH QDR 105° (CAT C) **not below 2100(2079)**. At I-SG DME 9.4 (SUM DME 9.5) base turn left to establish on the LOC. Once established continue as for main procedure.

NOTE 1 LOC is offset 2.6° north of the extended RWY C/L and intercepts the RWY C/L 0.4NM from the THR.
2 Due to the relative position of VOR/DME and the THR of RWY 27, DME SUM does not provide reliable ranges to the THR.
3 Reduced VM(C) minima applies to aircraft which manoeuvre outside the quadrant north of RWY 09/27 C/L and west of RWY 15/33 C/L.

CHANGE (13/23): VOR/DME SUM RECALIBRATED. RADIALS.